

TECHNICAL DATA	VALUE
Brand	IDEAL
Collection	GENT
Country of production	BELGIUM
Room class	22
Type of room	bedroom, study, lounge
Type of carpet	needle punched
Overall thickness	4 mm
Weight	1600 g/m ²
Composition of the pile	PP
Pile height	2 mm
Weight of the pile	480 g/m ²
Basis type	PRECOAT STAR
Standard roll winding	30 M
Fire hazard class (Russia)	KM5
Fire-technical characteristics: Flammability (B)	B3
Fire performance characteristics: smoke developed (Д)	Д2
Fire-technical characteristics: toxicity (T)	T4
Fire-technical characteristics: flame propagation (ПП)	ПП4
Resistance to furniture legs on the roller	yes
Impact noise reduction index	22 dB
Antistatic properties	no
Service life	5 years



Direct link
to the collection at bigfloor.pro

Carpet
IDEAL / GENT
Current assortment of colors and widths



GENT 300

Width: 2,0/3,0/4,0 M



GENT 716

Width: 4,0 M



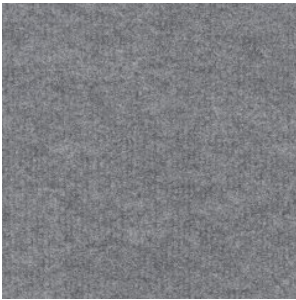
GENT 7745

Width: 1,0/2,0/3,0/4,0 M



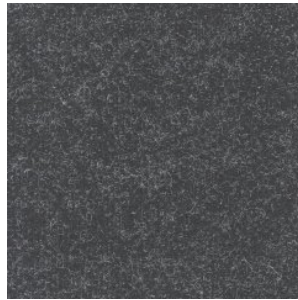
GENT 834

Width: 2,0/4,0 M



GENT 902

Width: 1,0/2,0/3,0/4,0 M



GENT 923

Width: 1,0/2,0/3,0/4,0 M

Images of designs may differ from actual product samples due to the color rendition of the printing industry.